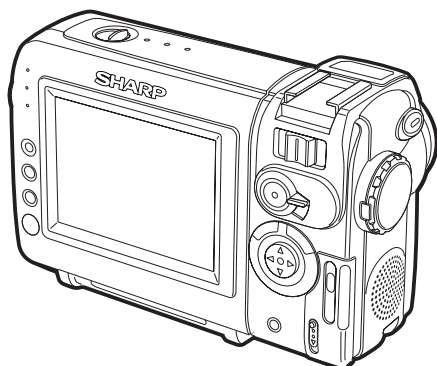


# SHARP SERVICE MANUAL

SY3VL-NZ8S///

LIQUID CRYSTAL DIGITAL CAMCORDER PAL



## MODELS

**VL-NZ8S**  
**VL-NZ8H**  
**VL-NZ8E**

In the interests of user-safety (Required by safety regulations in some countries) the set should be restored to its original condition and only parts identical to those specified be used.

In this Service Manual, only the differences from VL-NZ10S/H/E (S01B8VL-NZ10S) are described.

Therefore, for the parts which are not described in this Service Manual, refer to the Service Manual for VL-NZ10S/H/E (S01B8VL-NZ10S).

## CONTENTS

	Page
9. ADJUSTING THE ELECTRICAL CIRCUITS .....	2
13. SCHEMATIC DIAGRAMS .....	4
16. REPLACEMENT PARTS LIST .....	6
17. PACKING OF THE SET .....	14

## 9. ADJUSTING THE ELECTRICAL CIRCUITS

### [Making adjustments]

#### Adjusting the servo system controller and related parts

##### 1. Setting the system codes

Replacement of IC705 E<sup>2</sup>PROM requires the following data to be set in this order.

##### [Procedure]

Set the unit to the VCR mode and set the data for each address.

Code	1. Model code		2. Destination code			3. Specification code			4. Menu selection code			5. Software switching code		6. Calender switching	
Address	01	09		02	0A		03	0B		04	0C	05	0D	07	0F
Data	01	FE	S	0A	F5	S	B6	49	S	00	FF	00	FF	01	FE
			H	0D	F2	H	3E	C1	H	00	FF				
			EX	0B	F4	EX	BE	41	EX	00	FF				

When replacing the IC705 E<sup>2</sup>PROM, first make the following settings and then start the adjustments.

## DV INTERFACE (IEEE1394) ID SETTING

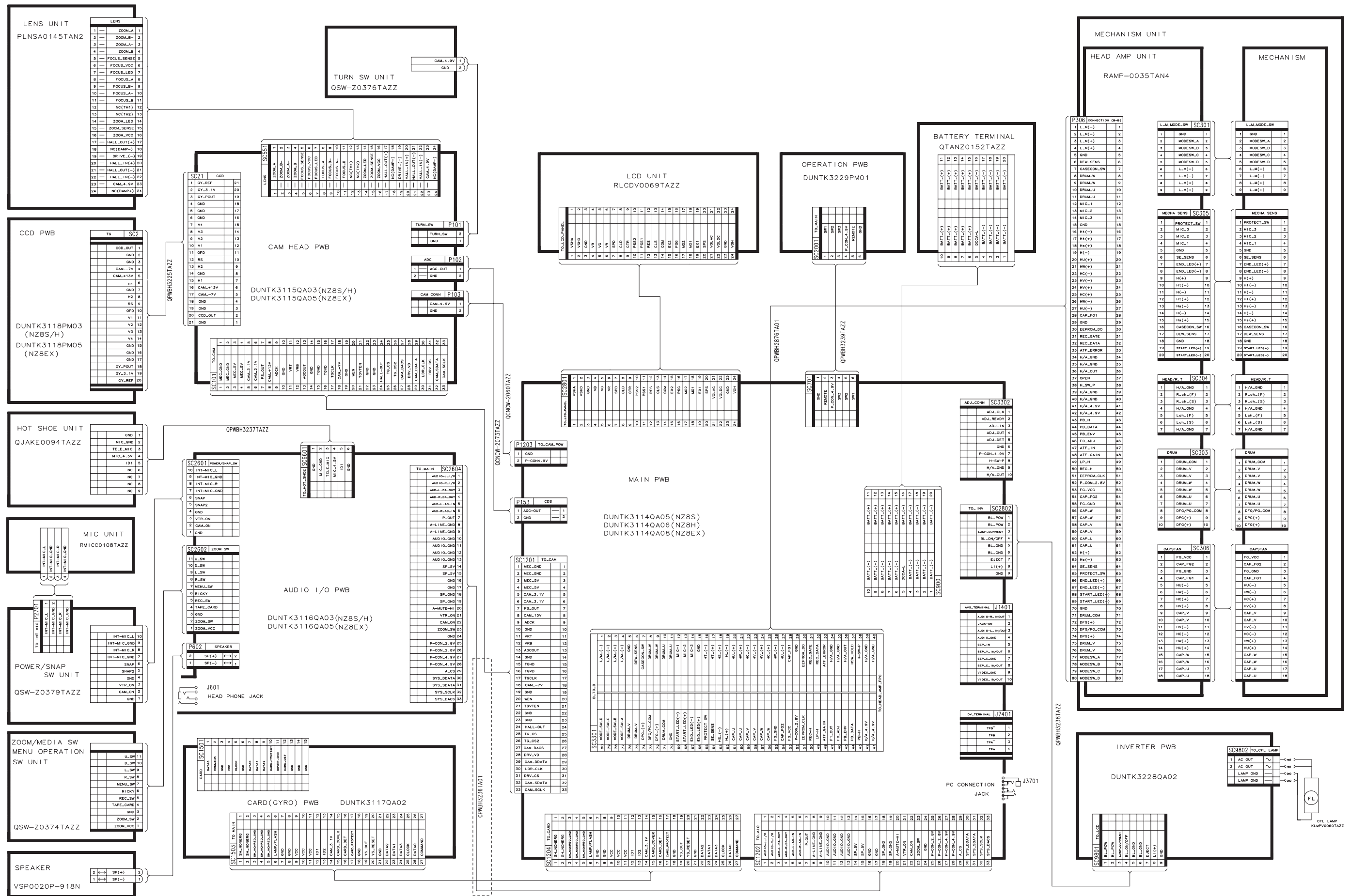
### MODEL ID SETTING

Address	VCR ADJ FD, FE, FF	Mode	VCR STOP mode	Adjustment rating	10, 20, 19
Procedure	1) Set the unit to the VTR adjustment mode with command 12. 2) Give E <sup>2</sup> PROM write enable with command 20. 3) Assign a MODEL ID to each address.				Address
					FDh
					FEh
					FFh
Examples	• During E <sup>2</sup> PROM (IC705) replacement.				Model
					1Fh
					S
					20h
					H
					21h
					EX

- M E M O -

[illegible]

### 13. SCHEMATIC DIAGRAMS 13-1. OVERALL SCHEMATIC DIAGRAM



## 16. REPLACEMENT PARTS LIST/ EXPLODED VIEWS

### ELECTRICAL PARTS LIST

Parts marked with "△" are important for maintaining the safety of the set. Be sure to replace these parts with specified ones for maintaining the safety and performance of the set.

### " HOW TO ORDER REPLACEMENT PARTS "

★MARK : SPARE PARTS-DELIVERY SECTION:ALL JAPAN

To have your order filled promptly and correctly, please furnish the following informations.

1. MODEL NUMBER	2. REF. NO.
3. PART NO.	4. DESCRIPTION
5. PRICE CODE	

△ MARK: SAFETY RELATED PARTS

PWB ASSEMBLY IS NOT REPLACEMENT ITEM

Ref. No.	Part No.	★	Description	Code
----------	----------	---	-------------	------

### PRINTED WIRING BOARD ASSEMBLIES (NOT REPLACEMENT ITEM)

DUNTK3114QA05	MAIN PWB Unit (VL-NZ8S)	—
DUNTK3114QA06	MAIN PWB Unit (VL-NZ8H)	—
DUNTK3114QA08	MAIN PWB Unit (VL-NZ8EX)	—
DUNTK3115QA03	CAMERA HEAD PWB Unit (VL-NZ8S/H)	—
DUNTK3115QA05	CAMERA HEAD PWB Unit (VL-NZ8EX)	—
DUNTK3116QA03	AUDIO I/O PWB Unit (VL-NZ8S/H)	—
DUNTK3116QA05	AUDIO I/O PWB Unit (VL-NZ8EX)	—
DUNTK3118PM03	CCD PWB Unit (VL-NZ8S/H)	—
DUNTK3118PM05	CCD PWB Unit(VL-NZ8EX)	—

Ref. No.	Part No.	★	Description	Code
----------	----------	---	-------------	------

### MECHANISM PARTS

301	LCHSM0181GEZZ		Main Chassis Ass'y	AQ
302	MLEVF0539GEFW		Eject Control Lever	AD
303	MLEVF0502GEFW		Pinch Control Lever	AD
304	NGERH3062GEFW		Main Cam	AD
305	MLEVF0503GEZZ		Shifter Drive Lever Ass'y	AE
306	MLEVF0505GEFW		Loading Lever	AD
307	MARMM0130GEZZ		S Loading Arm Ass'y	AF
308	MARMM0131GEZZ		Tu Loading Arm Ass'y	AF
309	MLEVF0508GEFW		T Arm Control Lever	AD
311	LANGG9121GEFW		CAP FPC Stopper	AD
312	LANGF9016GEZZ		Intermediate Gear ANG Ass'y	AG
313	MARMM0132GEZZ		Swing Arm Ass'y	AG
314	LANGJ0055GEFW		Mechanism Fixing Angle	AH
315	LANGJ0054GEFW		Head amp PWB ANG	AE
324	RDTCH0039GEZZ		Dew Sensor	AD
330	CCHSS0050GE03		Sensor FPC Affixing Slide Chassis	AY
331	LCHSS0050GEZZ		Slide Chassis Ass'y	AN
332	CPWBH6079GE01		Sensor FPC Ass'y	AV
334	LHLDP0104GEZZ		S-LED Holder	AC
335	LHLDP0105GEZZ		Tu-LED Holder	AC
337	LHLDZ0115GEZZ		Sensor FPC Guide	AC
338	QSW-M0035TAZZ		Down SW	AC
339	QTANZ0006GEZZ		Mic Contact SW	AG
340	RH-PX0180TAZZ		Cassette LED	AE
341	RH-PX0211TAZZY		S/E Sensor	AD
342	RDTCM0006TAZZ		Reel Sensor	AC
344	LANGG9124GEFW		Slide Adjustment ANG	AC
345	LANGG9126GEFW		Down Guide	AE
347	TLABH0590GEZZ		Cassette Control Caution Label	AB
351	MLEVF0542GEZZ		Tension Arm Ass'y	AG
352	MLEVF0511GEZZ		Tu Guide Arm Ass'y	AG
353	MLEVF0512GEZZ		Brake Shifter Ass'y	AE
354	LBNDK3022GEZZ		Tension Band Ass'y	AF
355	LANGA0073GEZZ		Reel Cover Ass'y	AG
356	LANGJ0038GEFW		T Spring Hanging ANG	AC
357	MLEVP0302GEZZ		Swing Arm Release Lever	AC
360	MLEVP0329GEZZ		Eject Lever	AC
361	MLEVP0296GEZZ		Pinch Drive Lever	AB
362	PGIDM0156GEZZ		Guide Rail	AC
363	PGIDM0186GEZZ		T Arm Control Lever Stopper	AC
364	NGERH1300GEZZ		Intermediate Gear A Ass'y	AE
365	NGERH1301GEZZ		Intermediate Gear B Ass'y	AB
366	NPLYV0164GEZZ		Intermediate Pulley Ass'y	AC
367	NPLYV0165GEZZ		Center Pulley Ass'y	AC
369	NGERH1302GEZZ		AHC Cam	AB
370	NGERH1303GEZZ		Coupling Gear	AB
371	NGERH1304GEZZ		Sub Cam	AC
372	NGERH1305GEZZ		S Loading Gear	AC
373	NGERH1306GEZZ		Tu Loading Gear	AC
374	MLEVP0333GEZZ		S Main Brake	AC
375	MLEVP0309GEZZ		Tu Main Brake	AB
376	LHLDX1046GEZZ		S Cassette Stay	AC
377	LHLDZ2024GEZZ		FPC Cover	AB
381	PGIDP0031GEFW		Tu Pole	AD
382	PGIDS0046GEFW		T Roller Upper Flange	AE
383	PGIDS0047GEFW		T Roller Bottom Flange	AE
384	NSFTL0761GEFW		T Roller Inner	AE
385	PGIDP0042GEFW		S Guide Sleeve	AD
386	PGIDM0170GEZZ		Slide Chassis Guide	AC
390	MSPRD0184GEFJ		Swing Arm Release SPR.	AC
391	MSPRT0417GEFJ		Main Brake SPR.	AB
392	MSPRT0436GEFW		T Arm SPR.	AB
393	MSPRD0178GEFJ		Tu Guide Arm SPR.	AB
394	MSPRD0179GEFJ		Pinch Lever Return SPR.	AB
395	MSPRD0180GEFJ		S Pressure SPR.	AB
396	MSPRD0181GEFJ		Tu Pressure SPR.	AB
397	MSPRC0220GEFJ		Guide Adjustment SPR.	AA
398	MSPRC0221GEFJ		Drum Fixing SPR.	AA

Ref. No.	Part No.	★	Description	Code	Ref. No.	Part No.	★	Description	Code
399	MSPRP0185GEZZ		PB Guide SPR.	AC	<b>CABINET PARTS LIST</b>				
401	LX-WZ1071GE02		CW ø 0.7 ø 1.8t0.1	AC	1	CLNS-0145RMAE		Lens Ass'y	BR
402	LX-WZ1104GE06		CW ø 0.7 ø 2.2t0.25	AB	2	CANGK0661TA01		Camera, PWB Fixing	AQ
403	LX-WZ1029GE00		CW ø 1.2 ø 3t0.25	AA				Angle Ass'y	
411	LZ-WZ1105GE00		W ø 1.2 ø 2.5t0.13	AA	2-1	PSLDM9194TAZZ		Camera PWB Shield Plate	AC
412	LZ-WZ1106GE00		W ø 1.2 ø 2.5t0.2	AA	2-2	DUNTK3115QA03		Camera Head PWB Unit	—
413	XWHJZ12-03025		W ø 1.2 ø 2.5t0.3	AA				(NZ8S/H)	
414	XWHJZ12-04025		W ø 1.2 ø 2.5t0.4	AA	2-2	DUNTK3115QA05		CAMERA HEAD PWB Unit	—
415	XWHJZ12-05025		W ø 1.2 ø 2.5t0.5	AA				(NZ8EX)	
420	LX-BZ3202GEFF		Swing Arm Release	AC	2-3	DUNTK3116QA03		Audio I/O PWB Unit	—
			Lever Fixing Screw					(NZ8S/H)	
421	LHLDZ2025GEZZ		Intermediate Gear Stopper	AB	2-3	DUNTK3116QA05		AUDIO I/O PWB Unit	—
425	LX-BZ0107GEFF		Special Screw M1.2 x L1	AB				(NZ8EX)	
426	LX-BZ0108GEFF		Special Screw M1.2 x L3.3	AA	2-4	PSLDM3376TAFW		Shield Case	AC
428	LX-NZ0102GEFW		S Guide Hexagon Nut	AC	2-7	QPWBH3235TAZZ		CCD-FPC	AE
429	LX-BZ3203GEFF		Type 1 Minuteness	AB	3	CCABC6117TAK2		KS Camera Front Cabinet	AX
			Screw M1.4 x L1		3-2	GCOVA1835TASB		Front Grip Cover	AG
430	LX-BZ3185GEFN		Special Screw M1.4 x L2	AB	3-3	LHLDZ1653TAZZ		Camera Front Cabinet	AC
431	LX-BZ3135GEFF		Type 2 Minuteness	AA				Holder	
			Screw M1.4 x L1		3-4	GCOVA3127TASA		Lens Decoration Cover	AR
432	LX-BZ3201GEFF		Special Head	AB	3-5	QEARP0340TAZZ		Lens Decoration Cover	AB
			Screw M1.4 x L2					Earth Sheet	
433	LX-BZ3132GEFF		Special Head	AA	3-6	HiNDP0247TASA		Lens Hood Nameplate	AD
			Screw M1.4 x L1.5		4	CCOVA1843TAK2		KS Microphone Cover	AY
434	LX-BZ3131GEFN		Special Screw M1.4 x L1.6	AA	4-2	QEARP0329TAZZ		Microphone Grill Earth	AD
435	LX-HZ3089GEFF		S Tight Screw M1.4 x L2	AA				Sheet	
436	LX-HZ3076GEFF		S Tight Screw M1.4 x L3	AA	4-3	PMLT-0239TAZZ		Microphone Molt	AB
437	LX-HZ3088GEFF		L Motor Installation	AB	4-4	PFLT-0039TAZZ		Microphone Spacer	AB
			Screw		4-5	HDECA0705TASA		Microphone Grill Earth	AK
438	LX-BZ3225GEFF		Drum Installation Screw	AC				Sheet	
439	LX-BZ3181GEFN		GR Lock Screw	AD	4-6	RMiCC0108TAZZ		Microphone Unit	AP
440	LX-HZ3084GEFF		S Tight Screw M1.4 x L4	AC	4-7	LHLDZ1640TAZZ		Microphone Holder	AC
451	LPOLM0065GEZZ		Sup Pole Base Ass'y	AK	4-8	PMLT-0240TAZZ		Microphone Sound	AB
452	LPOLM0066GEZZ		Tu Pole Base Ass'y	AK				Isolation Moil	
453	CGIDM0158GE03		Drum Base Ass'y	AH	4-9	JBTN-0361TASA		Still Button	AG
454	NROLM0046GEZZ		Guide Roller Ass'y	AM	4-10	QEARP0330TAFW		Still Button Earth Plate	AC
455	NROLM0045GEZZ		T Roller Ass'y	AK	4-11	GCOVA1826TAKB		Still Button Cover	AE
456	NDAiV1076GEZZ		S Reel Base Ass'y	AM	5	CCOVA1823TAK3		KS Camera Side Cover	AR
457	NDAiV1077GEZZ		Tu Reel Base Ass'y	AK	5-3	VSP0020P-918N		Speaker	AL
458	MLEVF0526GEZZ		Pinch Lever Ass'y	AP	5-4	QEARP0344TAZZ		Speaker Earth Sheet	AB
459	NBLTT0016GEZZ		Drive Belt	AD	5-5	LANGK0513TAFW		Speaker Hold Angle	AC
461	RMOTM1080GEZZ		L Motor Ass'y	AQ	6	CCABD6125TAK2		KS Camera Rear Cabinet	BC
462	RMOTV1023GEZZ		Capstan Motor	AY	6-2	PMLT-0242TAZZ		Operation Button Blindfold	AC
463	QSW-R0039GEZZ		Mode SW	AE				Spacer	
465	QPWBH5911GEZZ		LM/Mode FPC	AG	6-3	PMLT-0241TAZZ		Card Lid Spacer	AA
466	PDMP-0032GEZZ		Damper	AF	6-4	JBTN-0360TASA		Camera Operation Button	AG
470	DDRMV0069GE03		Drum Ass'y	BZ	6-5	GFTAS1018TAKB		Card Lid	AH
500	RAMP-0035TAN4		Head Amp PWB Unit	—	6-6	GMADI0038TASA		Card Lid Window	AD
501	PSLDM3352TAFW		H/A FPC Shield Plate	AX	6-7	JKNBP0233TASA		Card Lid Knob	AC
502	LANGG9125GEFW		Sensor FPC Cover	AC	6-8	LHLDZ1641TA00		Card Lid Lock	AC
					6-9	MSPRT0064TAFJ		Card Lid Knob Spring	AA
					6-10	LHLDZ1642TAZZ		Card Lid Lock Holder	AC
					6-11	MSPRD0089TAFJ		Card Lid Shaft Spring	AB
					6-12	LANGK0659TAZZ		Card Lid Shaft Angle	AE
					6-13	NSFTZ0178TAFW		Card Lid Shaft	AA
					6-14	QSW-Z0374TAZZ		Camera Operation Unit	AY
					6-16	LANGK0660TAFW		Rear Cabinet Fixing Angle	AD
					7	CCABA6230TAK2		KS V Frame	BF
					7-2	LSTYM0036TAZZ		Stay L Ass'y	AL
					7-3	PSPAG0138TA00		Floating Rubber	AC
					7-4	LSTYM0035TAZZ		Stay R Ass'y	AN
					7-5	PMLT-0244TAZZ		Lid Catch Spacer	AB
					7-6	TLABH0458TAZZ		Lithium Exchange Label	AC
					7-7	GFTAC3014TASA		Cassette Lid	AX
					7-8	PMLT-0243TAZZ		Dust Protection Spacer	AB
					7-9	LANGK0669TAZZ		Lid Lock Ass'y	AM
					7-10	JKNBP0236TASA		Cassette Lid Open Knob	AF
					7-11	GCOVA1841TAKB		Cassette Lid Cover	AM
					7-12	PTPEH0079TAZZ		Cassette Lid Decoration	AD
								Cover Fitting Tape	
					7-13	GCOVA1825TAKA		Cassette Lid Decoration	AN
								Cover	
					8	CANGK0651TA01		KS Radiation Angle	AH

## CASSETTE CONTROL PARTS

600	CHLDX3093GE01	Cassette Control Ass'y	AT
601	LHLDX3093GEZZ	Housing Ass'y	AT
602	LANGF9655GEZZ	Top Cover Ass'y	AG
603	MSPRT0434GEFJ	Lock SPR	AB
604	MSPRT0435GEFJ	UP-SPR	AB
610	TLABH0589GEZZ	Cassette Control Lock	AB
		Label	
434	LX-BZ3131GEFN	Special Screw M1.4 x L1.6	AA



Ref. No.	Part No.	★	Description	Code
9	PSHEP0228TAZZ		LCD Insulation Sheet	AB
10	CCOVA1840TAK3		KS Terminal Side Cover	AR
10-1	LANGK0672TAFW		Terminal Fitting Angle	AE
10-2	GCOVH1289TASB		AV Terminal Cover	AE
10-3	PSHEP0229TAZZ		LCD Covering Sheet A	AC
11	CCABB6263TAK2		LCD Cabinet	AW
11-1	GCOVA1827TAKB		LCD Mask	AL
11-2	PTPEH0077TAZZ		LCD Mask Fitting Tape	AE
11-3	QEARP0332TAFW		VCR Operation Earth Plate	AD
11-4	GCOVA1828TAZZ		R/C Light Reception Cover	AD
11-5	TLABH0459TAZZ		Turn Caution Label	AC
11-6	HBDGB0063TASA		Sharp Badge	AG
11-7	JBTN-0358TASA		VCR Operation Button	AF
13	CCOVA1821TAK1		Battery Cover	AR
13-1	JKNBP0235TASA		Battery Lock Knob	AC
13-2	MSPRC0152TAFJ		Battery Lock Spring	AA
13-3	LANGK0667TAFW		Battery Lock Fixing Angle	AD
13-4	QTANZ0152TAZZ		Battery Terminal Unit	AN
14	CCOVA3126TA02		Tilt Frame V	BD
14-1	PSPAZ0411TAZZ		Nolgraido	AF
14-2	LANGK0665TAFW		Tilt Frame C	AK
14-3	QEARP0333TAFW		Tilt Earth Plate	AB
14-4	PSPAZ0410TAZZ		Tilt Spacer	AF
14-5	LANGK0666TAFW		Stopper Angle	AC
14-6	QEARP0343TAFW		Tilt C Earth Plate	AC
14-7	QSW-Z0376TAZZ		Turn SW Unit	AF
14-8	LHLDZ1645TAZZ		FPC Holder	AD
14-9	CPWBH3236TA01		Tilt FPC	AX
14-10	QCNW-2060TAZZ		Power Cable(2pin)	AD
14-11	PGIDH0015TAFW		FPC Guide	AC
14-12	PFLT-0040TAZZ		Wire Fitting Tape	AA
14-13	PMLT-0249TAZZ		Sound Isolation Spacer B	AA
14-14	PSLDM9190TAZZ		Gasket	AD
14-15	PSHEP0252TAZZ		Tilt Insulation Sheet	AA
15	CHLDZ1646TA01		KS LCD Holder	AH
15-1	RLCDV0069TAZZ		LCD Panel	BT
15-2	CANGK0652TA01		KS LCD Earth Plate	AF
15-3	PSHEP0044TAZZ		Prism Sheet	AG
15-4	PSHEP0045TAZZ		Diffusion Sheet	AD
15-5	PGIDM0037TAZZ		Light Guide Plate	AG
15-6	PMIR-0021TAZZ		Reflection Sheet	AC
15-7	KLMPV0060TAZZ		Lamp Unit	AT
16-1	LANGT0468TASA		Shoe Angle	AF
16-2	QJAKE0094TAZZ		Shoe Terminal Unit	AM
16-3	QPWBH3237TAZZ		Shoe FPC	AG
16-4	QSW-Z0379TAZZ		Power SW Unit	AW
16-5	DUNTK3117QA02		Card PWB Unit	—
16-8	QPWBH3238TAZZ		Lithium FPC	AD
16-9	DUNTK3228QA02		Inverter PWB Unit	—
16-10	LANGK0668TAFW		Lid Lock Catch Angle	AE
16-11	QPWBH3239TAZZ		VCR Operation FPC	AD
16-12	DUNTK3114QA05		MAIN PWB Unit(NZ8S)	—
16-12	DUNTK3114QA06		MAIN PWB Unit(NZ8H)	—
16-12	DUNTK3114QA08		MAIN PWB Unit(NZ8EX)	—
18	LHLDB1028TASA		Lithium Holder	AD
19	TLABM2272TAZZ		Model Label(NZ8S)	AD
19	TLABM2273TAZZ		Model Label(NZ8H)	AD
19	TLABM2276TAZZ		Model Label(NZ8EX)	AD
20	GCOVA1829TAKB		Adjust Connector Cover	AG
a	LX-HZ0050TAFN		M1.7-4 N	AA
c	XiPSN17P03000		M1.7-3 N	AA
d	LX-BZ0221TAFD		M1.7-2 ROC	AB
e	XiPSN17P02000		M1.7-2 N	AA
g	LX-BZ0238TAFN		M1.7-6 N with Washer	AC
h	XiPSF17P02000		M1.7-2 F	AA
i	XiPSF17P03000		M1.7-3 F	AA
k	LX-BZ0251TAFD		Floating Screw A	AB
m	LX-BZ0253TAFN		Floating Screw B	AB
o	XiPSN17P06000		M1.7-6 N	AA
p	LX-HZ0063TAFN		M1.7-6 N Tapping	AA
q	LX-HZ0050TAFF		M1.7-4 F	AA
r	XiPSN17P04000		M1.7-4 N	AA
s	LX-HZ0084TAFN		M1.7-3 N	AA

Ref. No.	Part No.	★	Description	Code
<b>CAMERA UNIT PARTS LIST</b>				
1	PFILW0084TAZZ		Crystal Filter	AS
2	PCOVM8033TA00		Dust Protection Rubber	AC
3	CLNS-0145RMAE		CCD Service	BR
4	LX-HZ0073TAFD		M1.7 X 5 Tap	AA
5	DUNTK3118PM03		CCD PWB Unit(NZ8S/H)	—
5	DUNTK3118PM05		CCD PWB Unit(NZ8EX)	—
6	XiPSN17P03000		M1.7 X 2 Small Screw (Silver)	AA
7	PSLDM3375TAMS		Shield Case	AD
8	QPWBH3235TAZZ		CCD=Camera FPC	AE
9	LANGK0662TAFW		Lens Fixing Angle	AG
10	LX-HZ0050TAFN		M1.7-4 N	AA

Ref. No.	Part No.	★	Description	Code
----------	----------	---	-------------	------

### SUPPLIED ACCESSORIES

#### ACCESSORIES

⚠	QACCB0016TAZZ		AC Cable(NZ8H)	AV
⚠	QACCK0006TAZZ		AC Cable(NZ8S)	AL
⚠	QACCL0026TAZZ		AC Cable(NZ8EX)	AN
	QCNW-1914TAZZ		PC Cable(NZ8EX)	BG
	QCNW-1976TAZZ		AV/S Cable	AY
	QCNW-2058TAZZ		DC Cable	AQ
	QCNW-2044TAZZ		Headphone Cable (NZ8S/H)	AM
	QCNW-2045TAZZ		DV Cable(NZ8S/H)	AX
⚠	UADP-0334TAZZ		AC Adapter	BE
	GCOVH1291TASA		Lens Cap	AH
	GCOVH3061TASA		Lens Hood	AN
	GDAl-1059TAZZ		Tripod Adapter	AN
	CDSKA0059TA01		CD-ROM(NZ8EX)	AK
	TiNS-6048TAZZ		PC Soft Licence (NZ8EX)	AG
	TiNSL0295TAZZ		Operation Manual (German/French)(NZ8S)	AX
	TiNSL0296TAZZ		Operation Manual (Dutch/Italian/Spanish)(NZ8S)	AY
	TiNSL0297TAZZ		Operation Manual (Swedish/Portuguese/English) (NZ8S)	AX
	TiNSE0430TAZZ		Operation Manual(NZ8H)	AS
	TiNSL0298TAZZ		Operation Manual(NZ8EX)	AY
	TiNSE0154TAZZ		Service Guide(NZ8H)	AA
	TiNSE0431TAZZ		Quick User Guide(NZ8H)	AG
	UBATi0087TAZZ		Battery Pack	BE
	UBATL0011TAZZ		Lithium Battery	AE
	UBNDT0142TASA		Hand Strap	AH
	JHNDM0003TASA		Grip Handle	AL

#### ACCESSORIES

#### (NOT REPLACEMENT ITEM)

TGANE0050TAZZ	Guarantee Card(NZ8EX)	—
TGANE0057TAZZ	Guarantee Card(NZ8H)	—
TGANL0004TAZZ	Guarantee Card(NZ8S/H)	—
TLABK0001TAZZ	No. Card(x2)	—

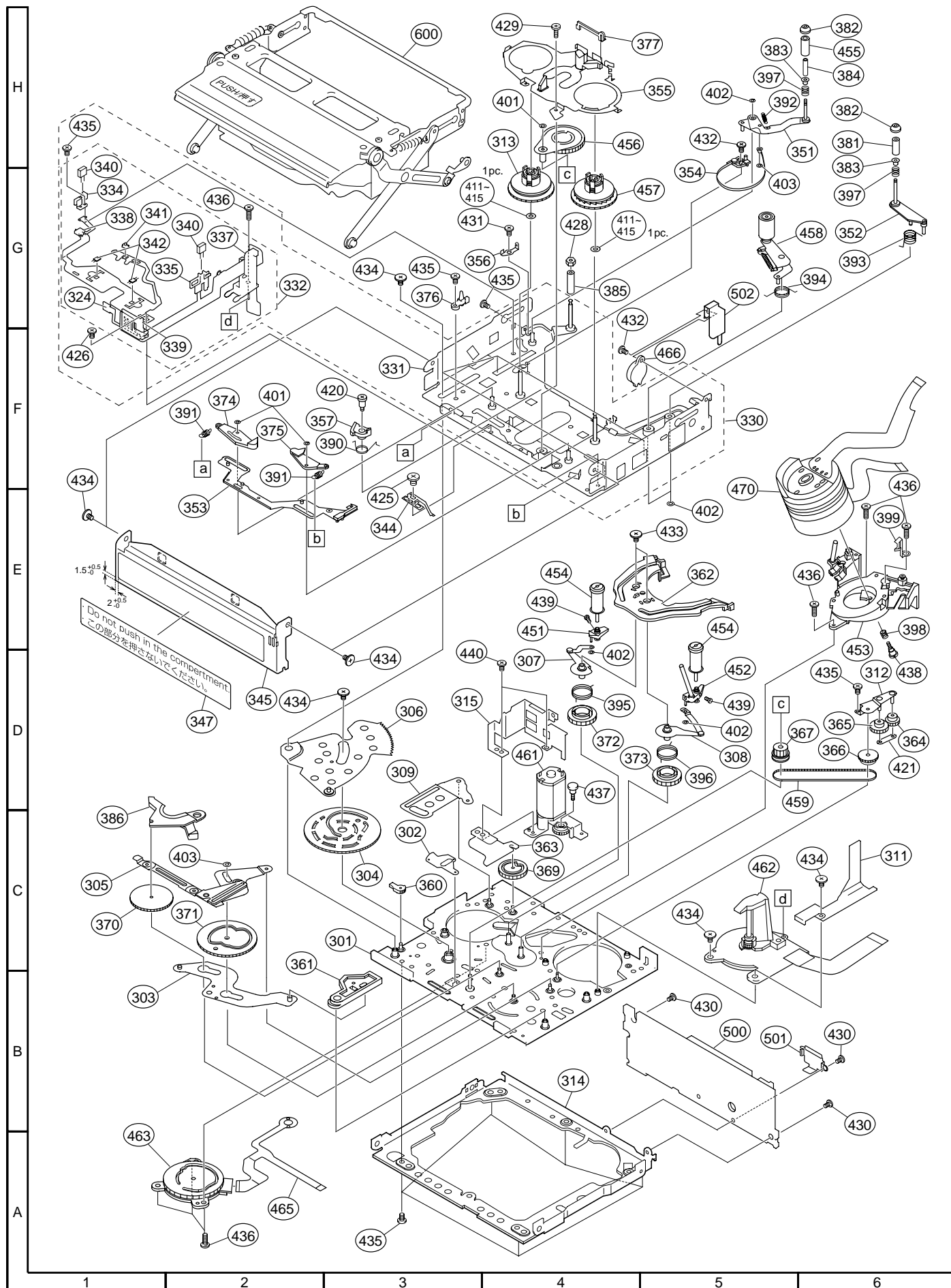
Ref. No.	Part No.	★	Description	Code
----------	----------	---	-------------	------

### PACKING PARTS (NOT REPLACEMENT ITEM)

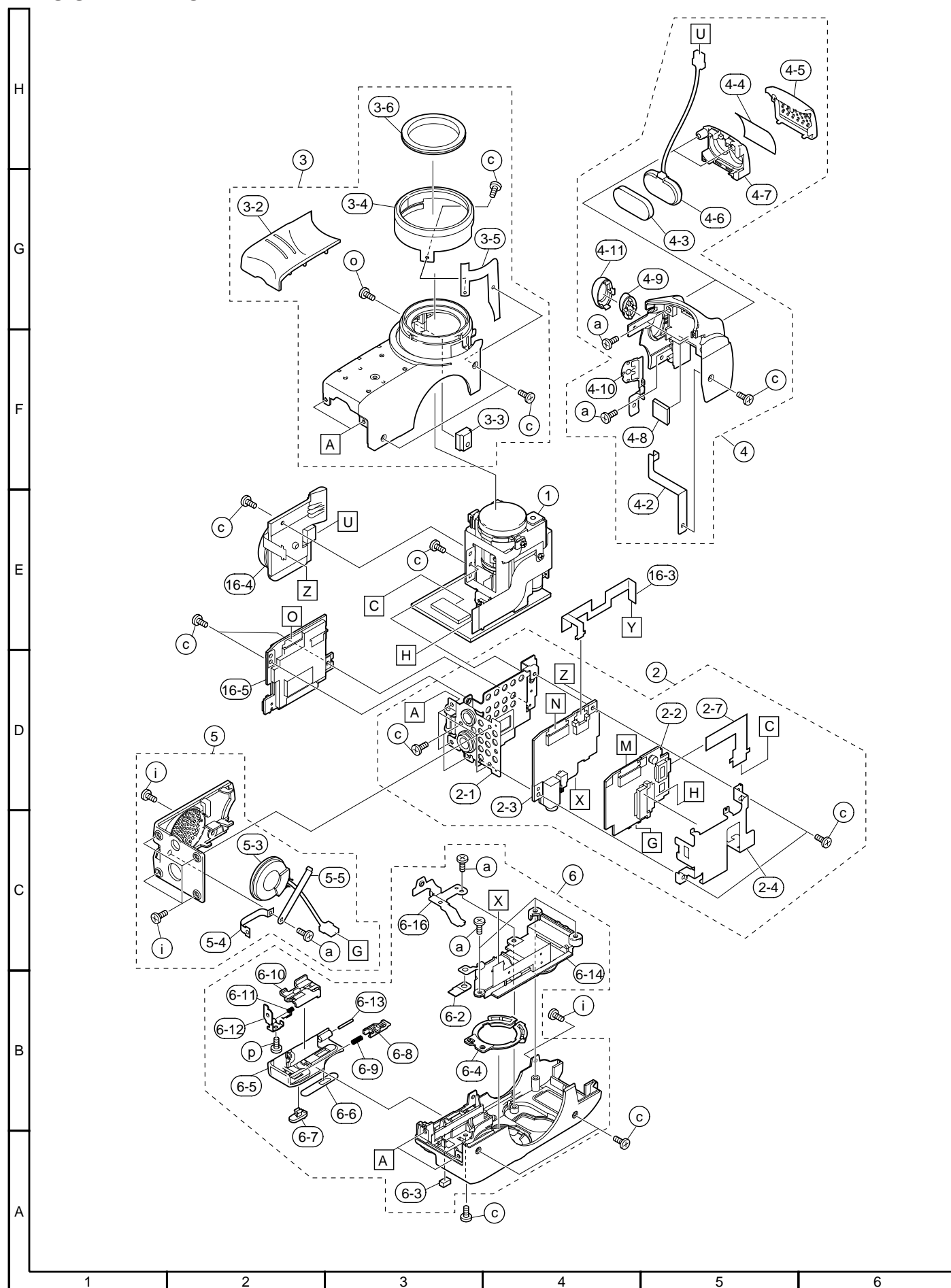
SPAKC7685TAZZ	Packing Case(NZ8S)	—
SPAKC7686TAZZ	Packing Case(NZ8H)	—
SPAKC7687TAZZ	Packing Case(NZ8EX)	—
SPAKA6405TAZZ	Packing Add. (Top)	—
SPAKA6406TAZZ	Packing Add. (Bottom)	—
SPAKA6407TAZZ	Packing Add.(NZ8EX)	—
SPAKA6418TAZZ	Packing Add. (NZ8S/H)	—
SPAKF0286TAZZ	AC Adapter Pad	—
SPAKP6108TAZZ	Side Pad	—
SPAKP6121TAZZ	Wrapping Paper	—
SSAKA0087TAZZ	Plastic Bag(NZ8H/EX)	—
SSAKA0117TAZZ	Plastic Bag(NZ8S)	—
SPAKF0292TAZZ	Spacer	—
SPAKF0293TAZZ	Bottom Spacer	—
SPAKP6172TAZZ	Air Cap(NZ8S/H)	—



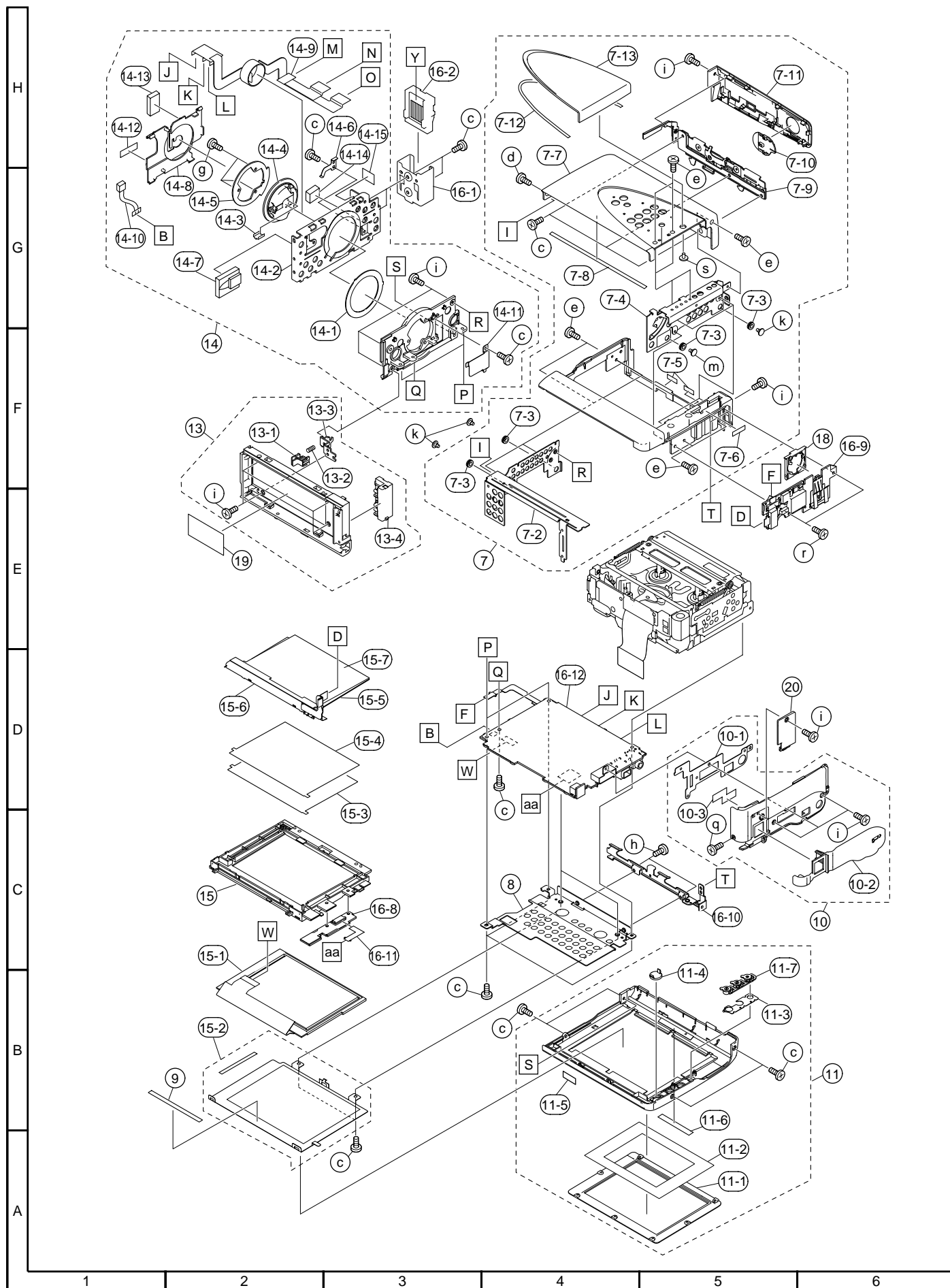
## MECHANISM CHASSIS EXPLODED VIEW



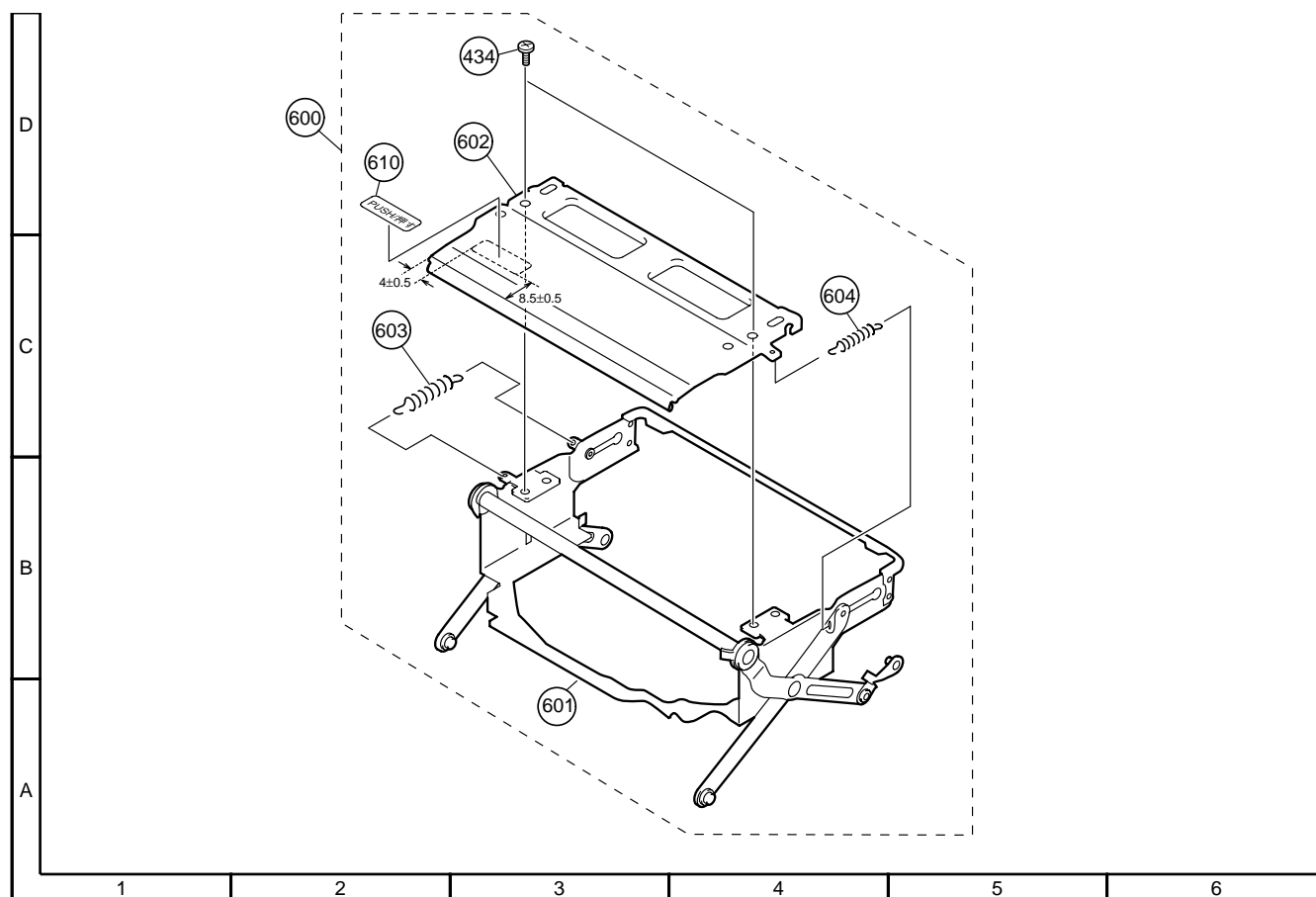
## LENS UNIT EXPLODED VIEW



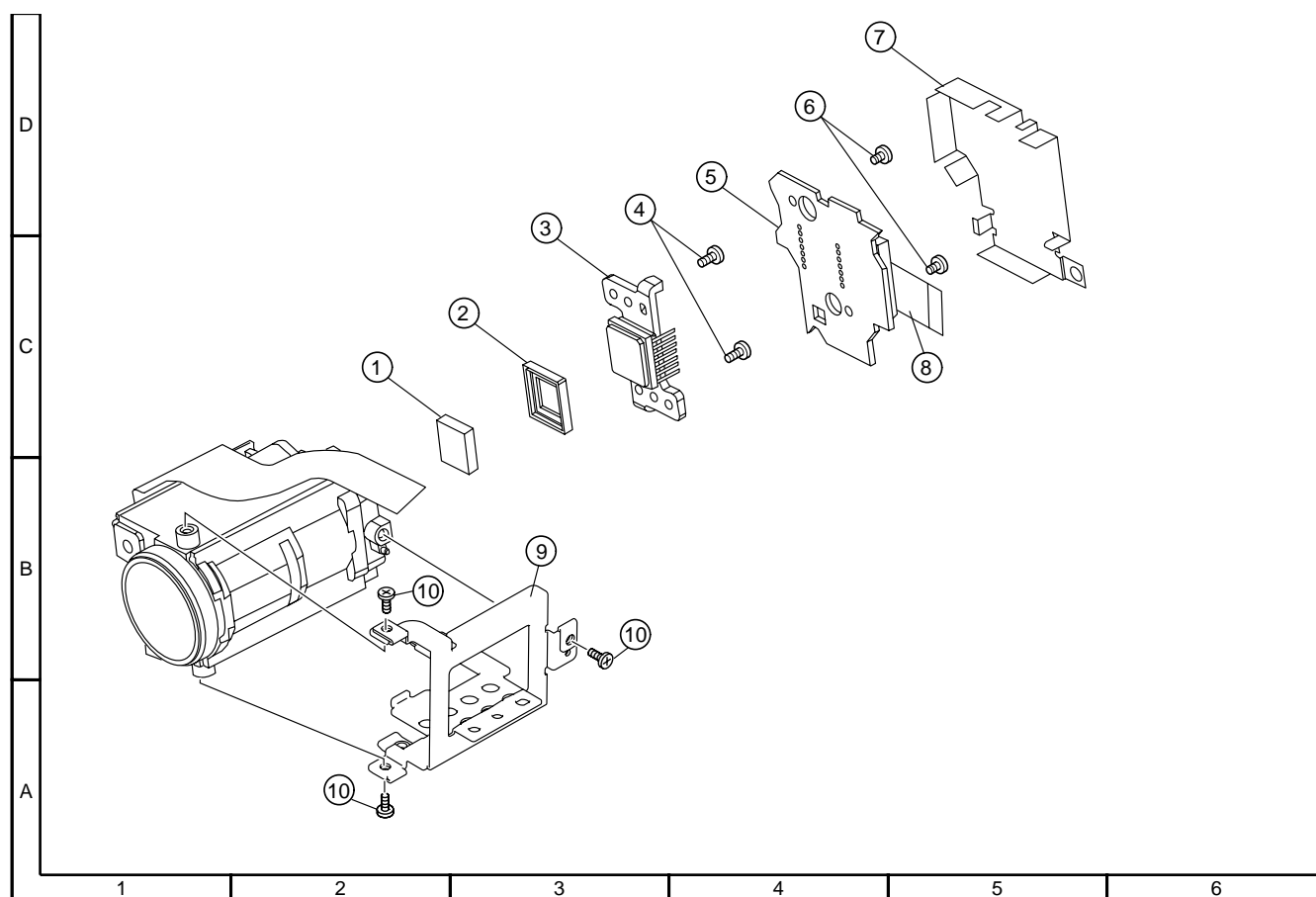
## CABINET EXPLODED VIEW



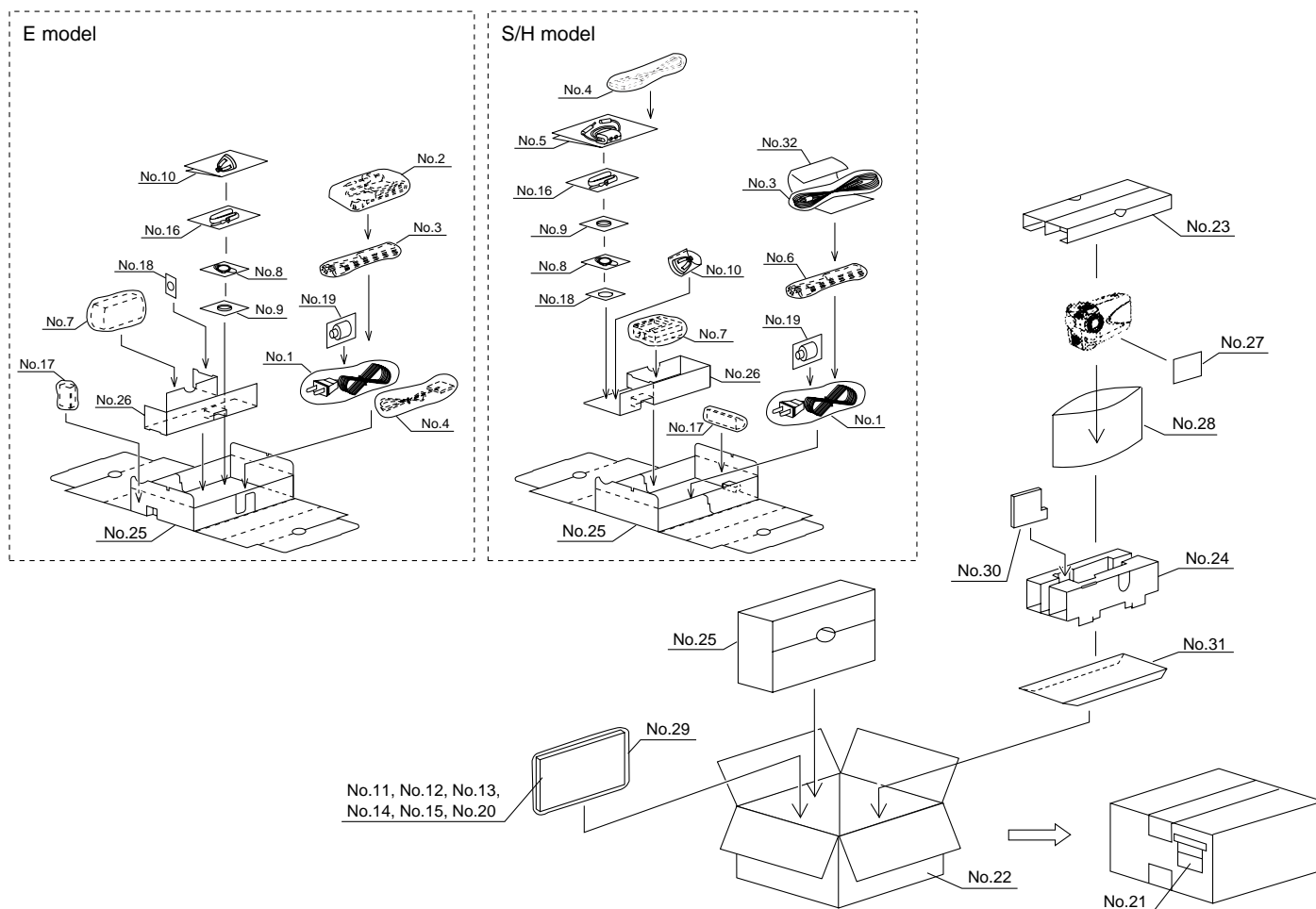
## CASSETTE CONTROL EXPLOD VIEW



## CAMERA UNIT EXPLOD VIEW



## 17. PACKING OF THE SET



### ACCESSORIES

No.	Model	Parts Code	Description	Remarks
1	NZ8H	QACCB0016TAZZ	AC Cable	⚠
	NZ8S	QACCK0006TAZZ	AC Cable	⚠
	NZ8EX	QACCL0026TAZZ	AC Cable	⚠
2	NZ8EX	QCNW-1914TAZZ	PC Cable	
3	– Common parts –	QCNW-1976TAZZ	AV/S Cable	
4	– Common parts –	QCNW-2058TAZZ	DC Cable	
5	NZ8S/H	QCNW-2044TAZZ	Headphone Cable	
6	NZ8S/H	QCNW-2045TAZZ	DV Cable	
7	– Common parts –	UADP-0334TAZZ	AC Adapter	⚠
8	– Common parts –	GCOVH1291TASA	Lens Cap	
9	– Common parts –	GCOVH3061TASA	Lens Hood	
10	– Common parts –	GDAI-1059TAZZ	Tripod Adapter	
11	NZ8EX	CDSKA0059TA01	CD-ROM	
12	NZ8EX	TiNS-6048TAZZ	PC Soft Licence	
13	NZ8S	TiNSL0295TAZZ	Operation Manual (German/French)	
	NZ8S	TiNSL0296TAZZ	Operation Manual (Dutch/Italian/Spanish)	
	NZ8S	TiNSL0297TAZZ	Operation Manual (Swedish/Portuguese/English)	
	NZ8EX	TiNSL0298TAZZ	Operation Manual	
	NZ8H	TiNSE0430TAZZ	Operation Manual	
14	NZ8H	TiNSE0154TAZZ	Service Guide	
15	NZ8H	TiNSE0431TAZZ	Quick User Guide	
16	– Common parts –	UBNDT0142TASA	Hand Strap	
17	– Common parts –	UBATI0087TAZZ	Battery Pack	
18	– Common parts –	UBATL0011TAZZ	Lithium Battery	
19	– Common parts –	JHNDM0003TASA	Grip Handle	

### ACCESSORIES (NOT REPLACEMENT ITEM)

No.	Model	Parts Code	Description	Remarks
20	NZ8H	TGANE0057TAZZ	Guarantee Card	★
	NZ8S/H	TGANL0004TAZZ	Guarantee Card	★
	NZ8EX	TGANE0050TAZZ	Guarantee Card	★
21	– Common parts –	TLABK0001TAZZ	No. Card(X2)	★

### PACKING PARTS (NOT REPLACEMENT ITEM)

No.	Model	Parts Code	Description	Remarks
22	NZ8S	SPAKC7685TAZZ	Packing Case	★
	NZ8H	SPAKC7686TAZZ	Packing Case	★
	NZ8EX	SPAKC7687TAZZ	Packing Case	★
23	– Common parts –	SPAKA6405TAZZ	Packing Add. (Top)	★
24	– Common parts –	SPAKA6406TAZZ	Packing Add. (Bottom)	★
25	NZ8EX	SPAKA6407TAZZ	Packing Add.	★
	NZ8S/H	SPAKA6418TAZZ	Packing Add.	★
26	– Common parts –	SPAKF0286TAZZ	AC Adapter Pad	★
27	– Common parts –	SPAKP6108TAZZ	Side Pad	★
28	– Common parts –	SPAKP6121TAZZ	Wrapping Paper	★
29	NZ8H/EX	SSAKA0087TAZZ	Plastic Bag	★
	NZ8S	SSAKA0117TAZZ	Plastic Bag	★
30	– Common parts –	SPAKF0292TAZZ	Spacer	★
31	– Common parts –	SPAKF0293TAZZ	Bottom Spacer	★
32	NZ8S/H	SPAKP6172TAZZ	Air Cap	★

MARK ★ Not Replacement Item

